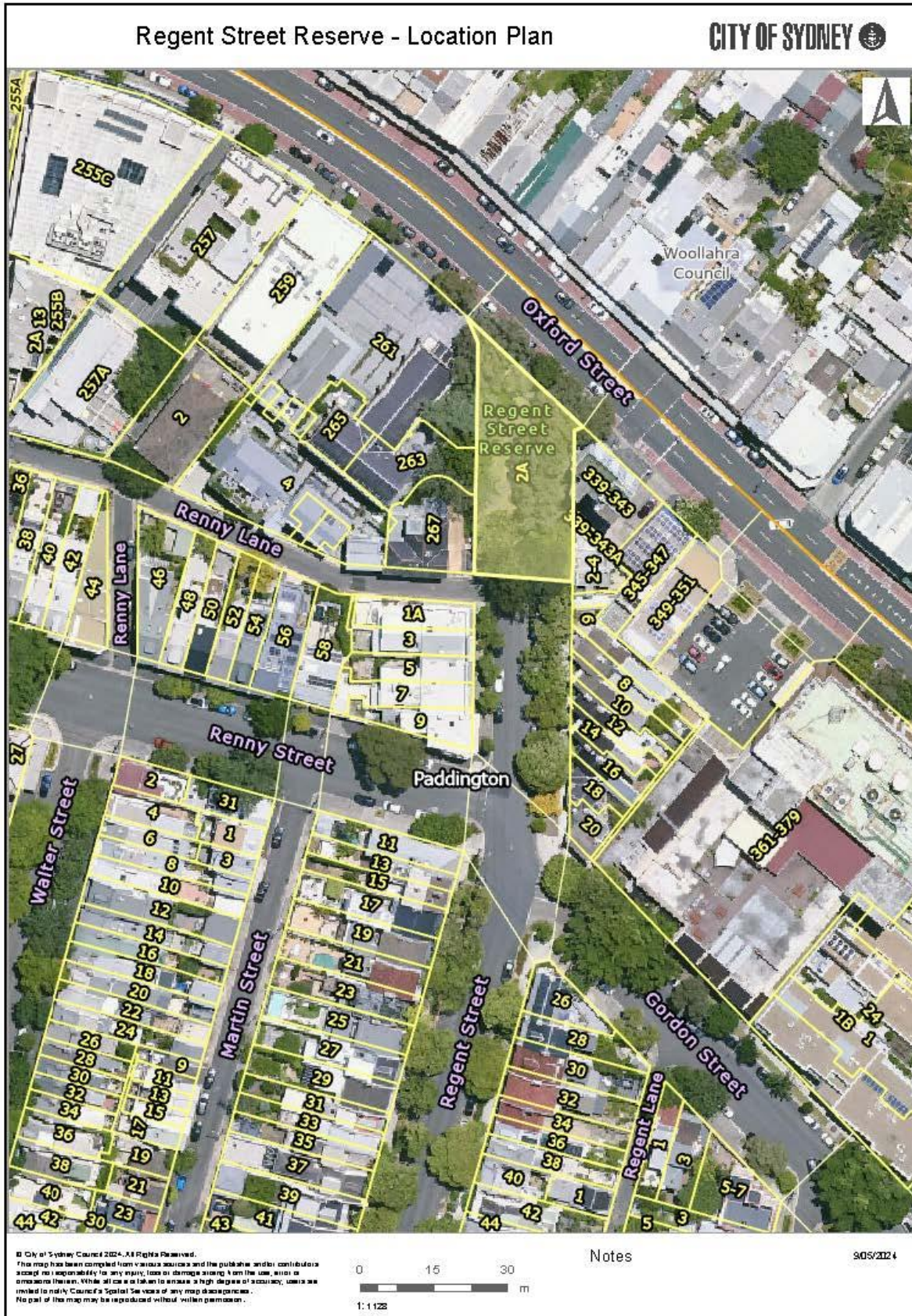


# **Attachment A**

**Location Plan and Site Photos**

# Regent Street Reserve, Paddington





Existing reserve looking south towards the rear of the site. The paving is at the end of its lifecycle. The turf is worn on the corners due to pedestrian movements. Sandstone planter bed retaining wall needs some maintenance to extend life. Mature trees fill the site and provide ample shade to the space.



Looking north towards Oxford Street from Regent Street. Uneven paving caused by the trees. Bollards stopping unwanted movement on to grass. End of life lighting and stormwater visible.